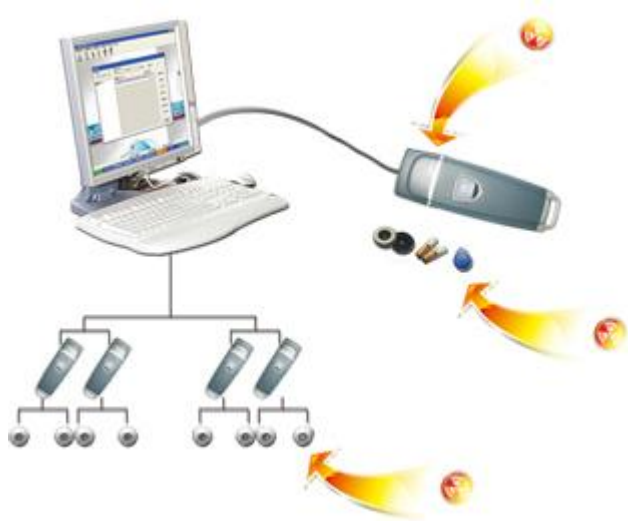


Guard Tour System

System components



1. 5000V5 reader
2. POGO Pin connecting cable
3. Charger
4. RFID tags
5. Guard ID card
6. Management software

5000V5 system is an updating product on the basis of WM-5000V+; it is with POGO Pin connector instead of the normal USB port, which makes the device more guard proof and waterproof. With special waterproof pad and adhesive, the reader can work in the water without problem; furthermore, 60000 records can be stored before the next download of data.

5000V5 works with RFID tags; with a simple non-contact swipe, the reader can read information from the tags, and then upload all the patrol records to the management software in a computer by a POGO Pin connecting cable; the information reports can demonstrate the guards' patrolling activities;

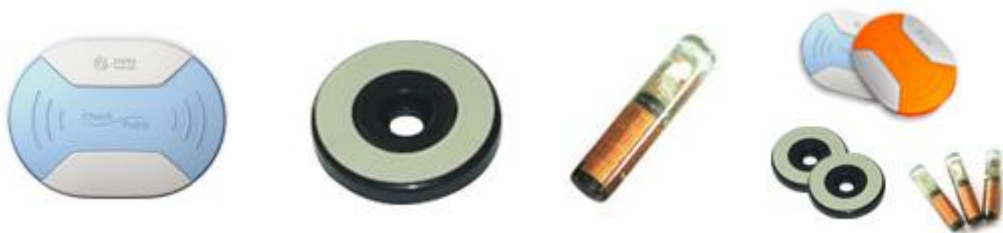


Features

Military component
Silicon tank, metal body with rubber shell outside, super durable
IP67 standard
POGO pin connecting cable, high download speed
Non-contact reading of RFID tag
Completely water proof and guard proof
Sabotage absorbent, resistant to electrical shock
Super storage capacity 4Mb Flash, 60000 records
Power off protection
REG colorful LED display
Reading distance ≤ 5 cm
Real time internal clock

Technical Information

WM-5000V5	
Dimensions:	144mm x 47mm x 30mm
Working Frequency:	125 KHz
Operating Temperature:	-45 ° to + 85 ° C
Memory:	4Mb Flash ROM
Storage Capacity:	60000 pieces of records
Battery :	3.7 V rechargeable battery, 800m Ah;
Signal Card Detection:	Auto induction card-reading
Card Reading Distance:	3cm -- -5cm
Communication:	POGO pin connecting cable 57600 BPS, 4000 records per minute
Weight:	227g



Features

RFID tags are constructed to withstand intentional sabotages, which can be read from long distances(0-12cm) and operated in wide temperature ranges. They are also completely waterproof, and can be sealed inside non-metallic material walls; Button, circle, keyring, nail and cylinder-shaped cards used as guard tour checkpoints. These can be installed either on or beneath wall surfaces; Key chain-attachable type personnel / incident card used to identify patrol personnel or events and incidents. Its working frequency is 125KHz.

Technical Information

EM signal card	
Physical	Water-resistant ant, ASB plastic case
Shape	Nail, button, circle, keyring and cylinder shape, etc.
Weight	About 2 g
Operating Temperature	-20° C to +50°C
Working Frequency	125KHz
Battery	None
Data Storage	Unique 64-bit serial number (read-only)

Charger



Charger	
Input Voltage	AC 110V-220V, 50-60 HZ
Output Voltage	4.5V-14V, 300-500mA
Operating Standard	GB 4943-2001

USB communication cable



Use POGO Pin connector as communication cable, which is according with DY/T1019, IEC61156, ANSI/EIA/TIA-568 standard.

Hardware quick start guide

1. The patrolling guard takes the reader and read his own Guard ID to identify himself with the system
2. Then the guards go to the checkpoints, the Reader will automatically read each RFID tag and no need touch it. When reading successfully, a flash of the blue indicator light accompanied by a “vibration” means that a reading has been made. The WM-5000V5 reader will store the signal card's ID number and time for every station reading.
3. After patrolling are done, use the USB cable to connect the computer and Reader directly and get a data analysis and management.